



OVERVIEW

- ♦ The LA612 is a linear pendant mount luminaire designed for direct and indirect applications, producing a glare and shadow free ambient light.
- ♦ The cross baffle produces 30% direct light distribution, while the open top produces 70% indirect light distribution.

FEATURES

- ♦ Available in 4ft. and 8ft. sizes.
- ♦ CRI greater than 80.
- ♦ Rated Life [L70] — 50,000 Hours.
- ♦ Fixture lumens per watt ratios [LpW] — Greater than 100.
- ♦ Class P Universal driver, 120-277V (50/60Hz)
- ♦ 0-10V Dimming
- ♦ Motion Sensors

HOUSING

- ♦ Constructed from 20 gauge roll formed steel body with center slotted openings.
- ♦ Optional perforations on the bottom sides parallel to the center lots and/or perforations on the top are optional for additional light distribution.

LENS

- ♦ Three inch wide center baffles are standard.
- ♦ White acrylic lens with Lumieo® overlay is optional.

REFLECTORS

- ♦ Completed with enhanced anodized aluminum for maximum efficiency for direct and indirect controls.

PROJECT _____

TYPE _____

QTY. _____

APPLICATIONS

- ♦ Lobbies
- ♦ Conference Rooms
- ♦ Showrooms
- ♦ Reception Areas
- ♦ Libraries
- ♦ Classrooms

INSTALLATIONS

- ♦ Designed for pendant mount with adjustable aircraft cable.
- ♦ Cable suspends 48" from ceiling.
- ♦ For individual or continuous run applications.

LED

- ♦ Linear arrayed LED modules produce a perfect combination of diffuse and effective illumination.
- ♦ Each board contains several precisely placed mid-power, high efficacy LEDs in a layout that replaces the need for supplemental heat sinking.
- ♦ The LED boards maximize optical efficiency by producing evenly diffused light.
- ♦ Dimming down to 1% on 0-10V dimming controls is standard.

WARRANTY

- ♦ 5 year limited warranty is standard.

Exclusions may apply. Contact factory for terms and conditions.

LISTINGS/QUALIFICATIONS

- ♦ ETL C/US
- ♦ Proudly Made in America



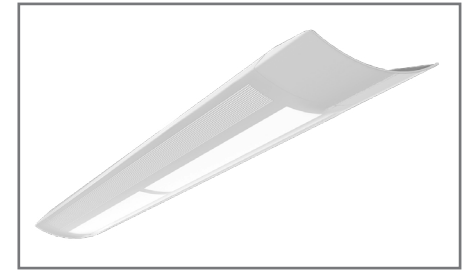
ORDERING GUIDE

Fill in the boxes below with the corresponding **bold** options.

Example: **LA612-4-60L-40K-U-D1-H1-H3**

LA612				U	D1				
SERIES	FIXTURE LENGTH	NOMINAL LUMENS	COLOR TEMP.	VOLTAGE	DIMMING	CENTER HOUSING	SIDE HOUSING	OPTIONS	
LA612	4 4FT. 8 8FT.	4FT. 34L 3400 47L 4700 60L 6000 8FT. 68L 6800 100L 10000 Custom Lumen Package. Contact Factory. XXX XXXX	30K 3000K 35K 3500K 40K 4000K 50K 5000K	U 120-277V	D1 0-10V Dimming to 1%*	H1 Baffle (Standard) H2 Lens Overlay	H3 Solid (Standard) H4 Perforated	Emergency E5 Emergency Battery Back-Up, 500 Lumens E7 Emergency Battery Back-Up, 700 Lumens E10 Emergency Battery Back-Up, 1000 Lumens E13 Emergency Battery Back-Up, 1300 Lumens Sensor M5 Occupancy Motion Sensor On/Off Control M6 Occupancy Motion Sensor Bi-level Control	

*Compatible with 0-10V dimmers.



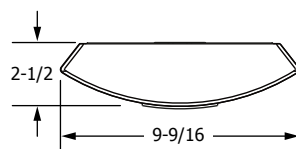
Shown with optional overlay lens and perforations.

PHOTOMETRICS

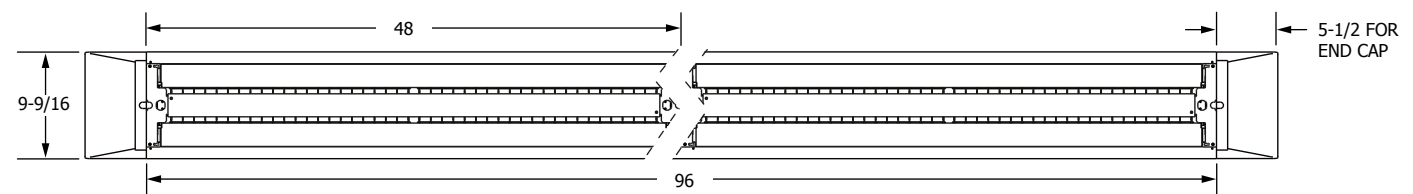
Photometric reports are available at www.ullighting.net

DIMENSIONS

END VIEW



BACK VIEW



OPENED CENTER SLOTS

