



PROJECT	_____
TYPE	_____
QTY.	_____



**OVERVIEW**

- ◆ Economy-grade, recessed, lay-in T-Bar luminaire with framed door. For use in applications where low cost, high quality and ease of installation are required. Shallow design accommodates mounting into low ceiling plenum's
- ◆ Available in 1'x4', 2'x2' and 2'x4' configurations.
- ◆ Ideal for restricted plenum spaces.
- ◆ Integral earthquake clips.
- ◆ Available with 2, 3 or 4 lamps.

**CONSTRUCTION**

- ◆ Housing— Die formed from cold rolled steel and embossed with stiffeners for strength and uniformity. Features durable steel bodies, quality paint finishes and superior electrical components.
- ◆ Full-length wireway covers are die formed for durability and attach easily without the use of tools.
- ◆ Door and Diffuser—Standard door is flush white steel— Door frame can also be removed without tools; latching and hinging is reversible—Low brightness, 100% virgin acrylic clear prismatic lens is standard—Standard prismatic lens provides high efficiency with maximum visual comfort and uniform light diffusion.
- ◆ Ends—End plates have interlocking tabs and are securely attached by rivets—Ample knockouts are provided on back and ends for convenient installation—Auxiliary fixture end suspension points provided.
- ◆ Finish—Prior to painting, all metal parts are treated with a multi stage phosphate bonding process to ensure adhesion and inhibit rusting—Painted with a lighting grade baked white enamel, having a reflectance factor exceeding 87% for premium quality and durability.

**APPLICATIONS**

- ◆ Offices
- ◆ Hallways
- ◆ Commercial Locations

**INSTALLATION**

- ◆ Recessed troffers designed for installation in an inverted T-bar ceiling where a light source is required

**ELECTRICAL**

- ◆ All electrical components are UL or ETL Listed. Lamp holders provided ensure positive lamp retention.
- ◆ Sufficient knock-outs are provided for connections and through wiring.
- ◆ Electronic class P, thermally protected ballasts standard.
- ◆ Green ground screw installed in channel.
- ◆ All fixtures come equipped with ballast disconnect to meet NEC code 410.73.

**APPROVALS**

- ◆ ETL Listed. Suitable for dry and damp locations with ETL Damp Label.



### ORDERING GUIDE

Fill in the boxes below with the corresponding **bold** options.

Example: **REG800-24-G-4-32-T8-B8IN-MV**

REG800		<b>G</b>					<b>MV</b>					
SERIES	FIXTURE SIZE	MOUNTING	NO. OF LAMPS	WATTAGE	LAMP TYPE	BALLAST TYPE	VOLTAGE	OPTIONS				
<b>REG800</b>	T8											
	<b>14   1X4</b>	<b>G</b>	<b>2</b>	<b>32</b>	<b>T8</b>	<b>B8IN</b>	<b>MV</b>	<b>EM1</b>	Emergency Battery Back Up 1 Lamp Operation			
	<b>22   2X2</b>	<b>G</b>	<b>2   3   4</b>	<b>17</b>	<b>T8</b>	<b>B8IN</b>	<b>MV</b>	<b>EM2</b>	Emergency Battery Back Up 2 Lamp Operation			
	<b>22   2X2</b>	<b>G</b>	<b>2</b>	<b>32</b>	<b>U6T8</b>	<b>B8IN</b>	<b>MV</b>	<b>2C</b>	2 Circuit			
	<b>24   2X4</b>	<b>G</b>	<b>2   3   4</b>	<b>32</b>	<b>T8</b>	<b>B8IN</b>	<b>MV</b>	<b>DIM</b>	Dimming—Consult Factory			
								<b>63WI</b>	6ft. 3 Wire Whip Installed			
								<b>64WI</b>	6ft. 4 Wire Whip Installed			
	T5HO											
	<b>14   1X4</b>	<b>G</b>	<b>2</b>	<b>54</b>	<b>T5HO</b>	<b>B5HOP</b>	<b>MV</b>	<b>Ballast</b>				
	<b>22   2X2</b>	<b>G</b>	<b>2   3   4</b>	<b>24</b>	<b>T5HO</b>	<b>B5HOP</b>	<b>MV</b>	<b>B8IN</b> T8, Instant Start NBF (Standard)				
	<b>24   2X4</b>	<b>G</b>	<b>2   3   4</b>	<b>54</b>	<b>T5HO</b>	<b>B5HOP</b>	<b>MV</b>	<b>B5HOP</b> T5 HO, Program Start				
								<b>B5HOI</b> T5 HO, Instant Start				
								<b>Voltage</b>				
								<b>MV</b> 120-277V				
								<b>Mounting</b>				
								<b>G</b> Lay in for T-Bar Ceiling				

Consult Factory for additional configurations and options not listed or shown.

#### Ballast

**B8IN** T8, Instant Start NBF (Standard)

**B5HOP** T5 HO, Program Start

**B5HOI** T5 HO, Instant Start

#### Voltage

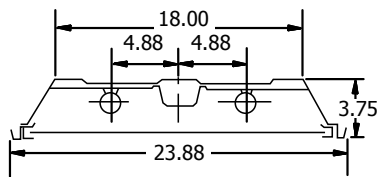
**MV** 120-277V

#### Mounting

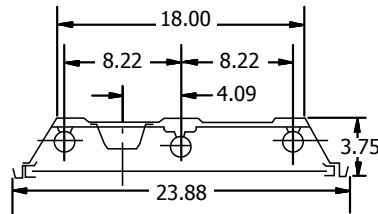
**G** Lay in for T-Bar Ceiling

### DIMENSIONS

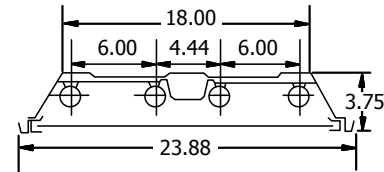
2X2, 2X4 | 2 LAMPS



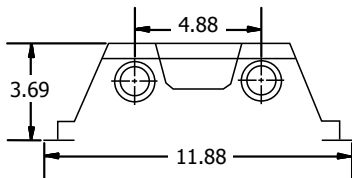
2X2, 2X4 | 3 LAMPS



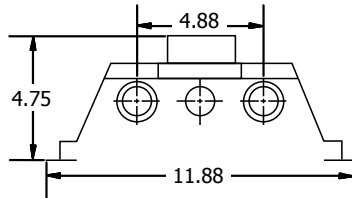
2X2, 2X4 | 4 LAMPS



1X4 | 2 LAMPS



1X4 | 1 OR 3 LAMPS



1X4 | 4 LAMPS (SPECIAL ORDER)

