

APPLIES TO MODELS: SM716-2, SM716-4

GENERAL SAFETY INFORMATION

- ♦ To reduce the risk of death, personal injury or property damage from fire, electric shock, falling parts, cuts/abrasions, and other hazards read all warnings and instructions included with and on the fixture box and all fixture labels.
- ♦ Before installing, servicing, or performing routine maintenance upon this equipment, follow these general precautions.
- ♦ Commercial installation, service and maintenance of luminaires should be performed by a qualified licensed electrician.
- ♦ To prevent wiring damage or abrasion, do not expose wiring to edges of sheet metal or other sharp objects.
- ♦ Do not make or alter any open holes in an enclosure of wiring or electrical components during kit installation.
- ♦ **DO NOT INSTALL DAMAGED PRODUCT!**
- ♦ This fixture is intended to be connected to a properly installed and grounded UL listed junction box.
- ♦ Suitable for Dry or Damp locations

WARNING: RISK OF ELECTRICAL SHOCK

- ♦ Turn off electrical power at fuse or circuit breaker box before wiring fixture to the power supply.
- ♦ Turn off the power when you perform any maintenance.
- ♦ Verify that supply voltage is correct by comparing it with the luminaire label information.
- ♦ Make all electrical and grounded connections in accordance with the National Electrical Code and any applicable local code requirements.
- ♦ All wiring connections should be capped with UL approved wire connectors.

CAUTION: RISK OF INJURY

- ♦ Wear gloves and safety glasses at all times when removing luminaire from carton, installing, servicing or performing maintenance.
- ♦ Avoid direct eye exposure to the light source while it is on.
- ♦ Account for small parts and destroy packing material, as these may be hazardous to children.

CAUTION: RISK OF FIRE

- ♦ Keep combustible and other materials that can burn away from luminaire and lamp/lens.
- ♦ MIN 90°C SUPPLY CONDUCTORS.

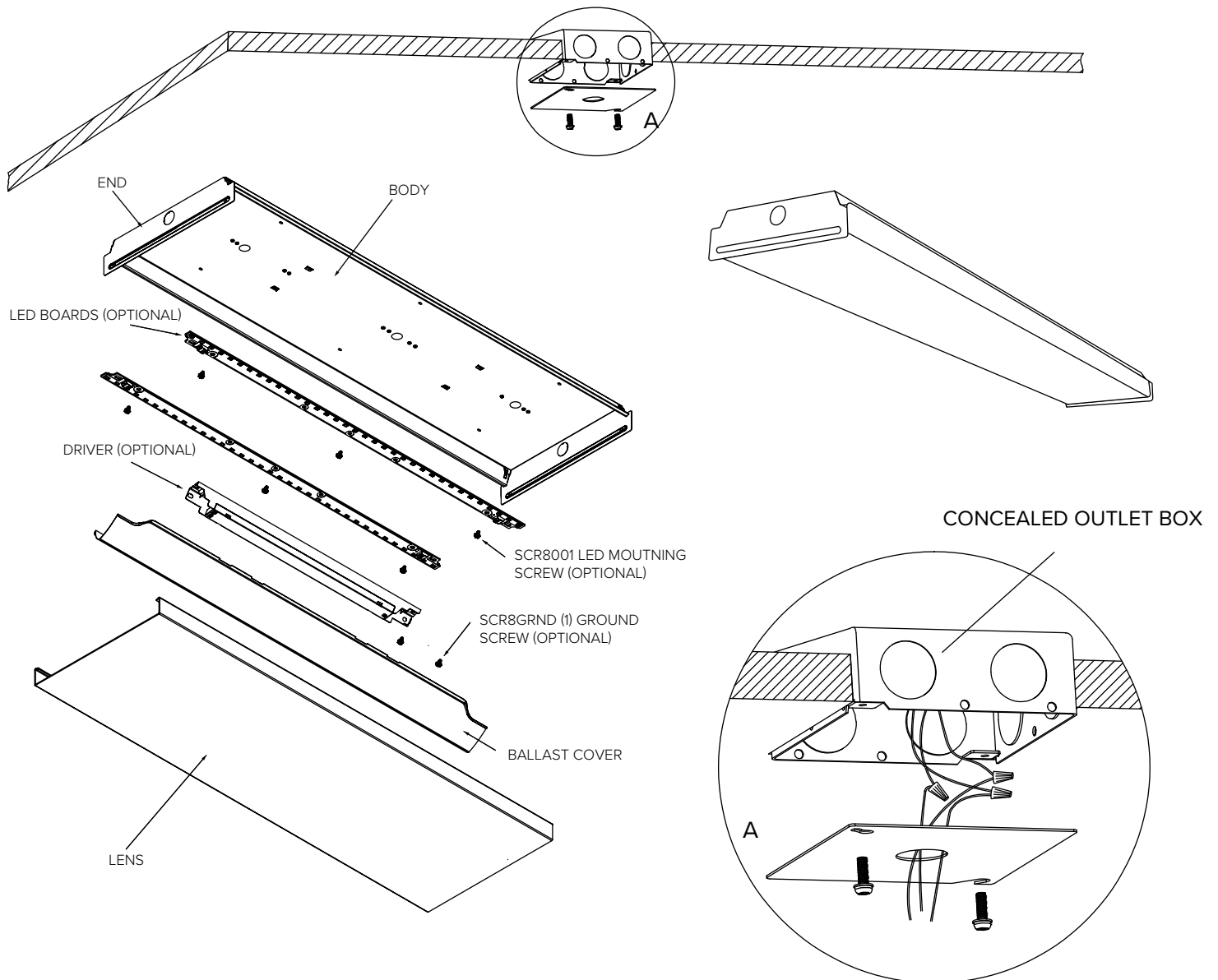
SAVE THESE INSTRUCTIONS

Use only in the manner intended by the manufacturer. If you have any questions, contact the manufacturer. Each luminaire is to be used with inside driver kit. Wiring to be performed by qualified electrician only.

INSTALLATION

APPLIES TO MODELS
SM716-2, SM716-4

- Step 1:** Remove product from packaging.
Step 2: Remove lens by pulling from one side of the fixture and hinge on the other.
Step 3: Remove driver cover.
Step 4: For mounting, using the provided mounting holes on each end of the fixture housing.
 Mount per required application (surface or suspended), Appropriate hardware should be used (supplied by others).
Step 5: Make electrical connections according to code.
Step 6: Install driver cover.
Step 7: Install lens on one side of the fixture and rotate to engage the opposite side.



INFRARED OCCUPANCY MOTION SENSOR INSTALLATION

APPLIES TO MODELS

SM716-2, SM716-4

- Step 1:** Open the plastic lens.
Step 2: Hook flat sensor antenna with plastic fingers onto led driver cover.
Step 3: Screw the sensor onto the fixture housing.
Step 4: Connect the sensor antenna to sensor through provided cable.
Step 5: Cover the plastic lens. Turn on the power.

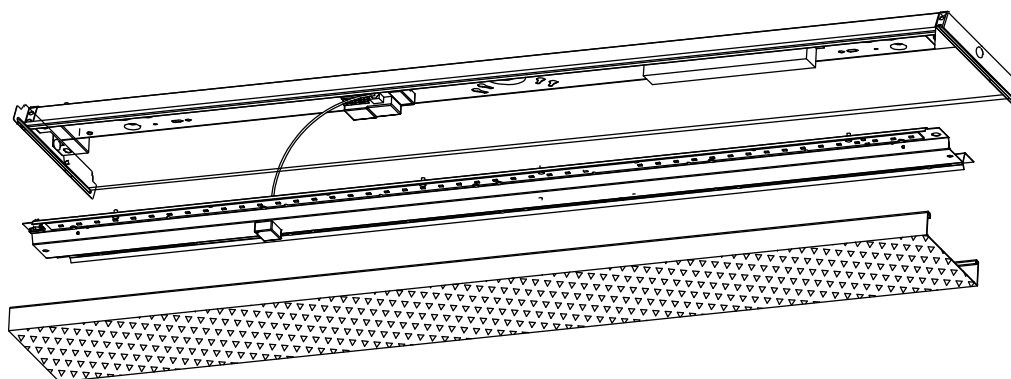


FIGURE 1

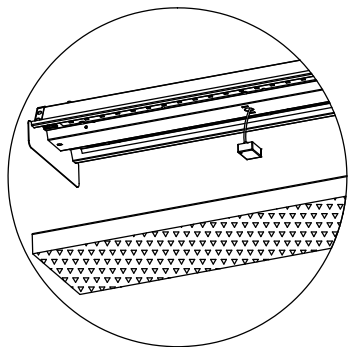


FIGURE 2

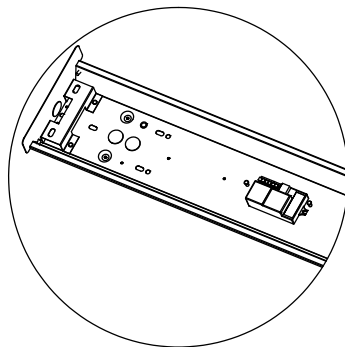


FIGURE 3

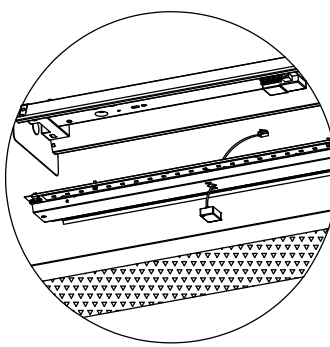


FIGURE 4

